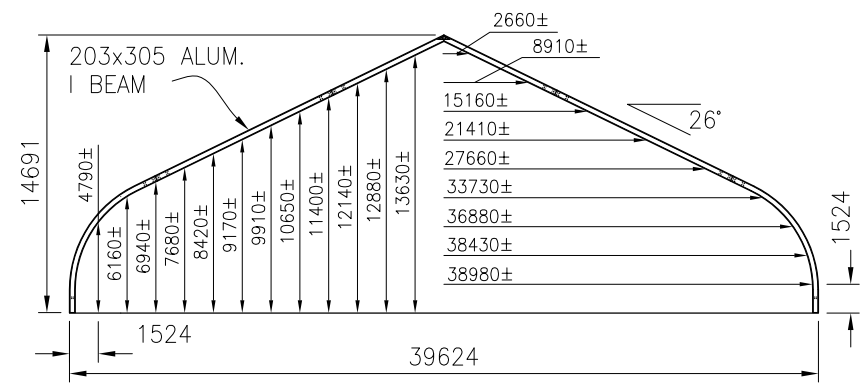
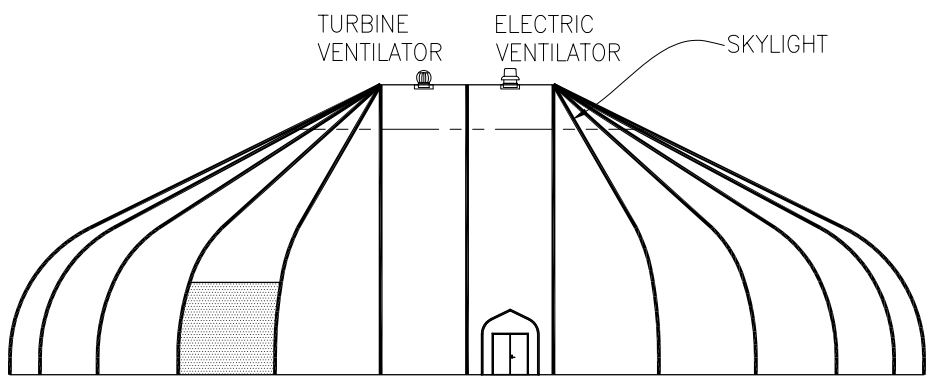


○ PLAN VIEW
1:500

- THE FOLLOWING DOORS ARE AVAILABLE AT EXTRA CHARGE:
- SINGLE PERSONNEL DOOR 1219w x 2134h (C/W 3048 HOOD)
 - DOUBLE PERSONNEL DOOR 1830w x 2134h (C/W 3048 HOOD)
 - SIDE SLIDING CARGO DOOR 4360w x 4420h
 - END SLIDING CARGO DOOR TOP 5080w, BASE 5330w x 4420h
 - DOUBLE PANEL ROLLING DOOR TOP 1540w, BASE 10790w x 12970h ((SEE DPRD-39.6m (130'))
 - TRIPLE PANEL ROLLING DOOR TOP 2280w, BASE 16000w x 12970h ((SEE TPRD-39.6m (130'))



○ SECTION 39.6m STRUCTURE
1:400



○ ELEVATION
1:400

SIGNATURE SERIES



SIGNATURE SERIES 39.6m WIDE STRUCTURE	
DATE 08/25/2006	SCALE AS NOTED
DRAWING # S-130 METRIC	