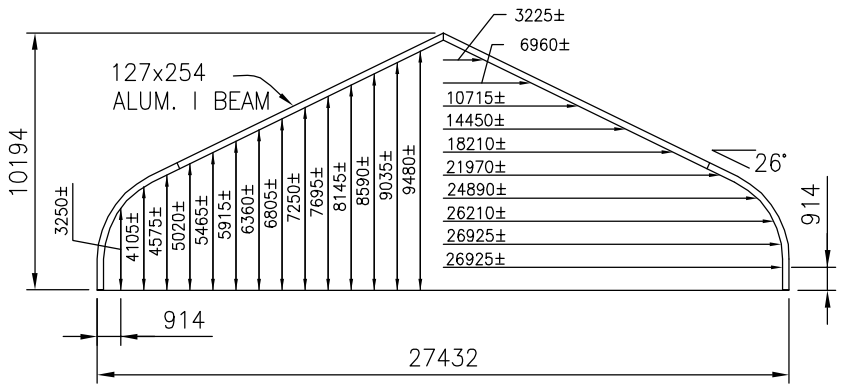
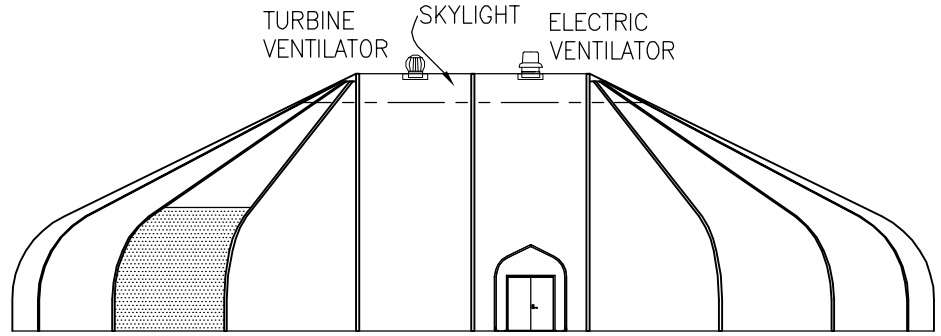


- THE FOLLOWING DOORS ARE AVAILABLE AT EXTRA CHARGE:
- SINGLE PERSONNEL DOOR 914w x 2134h (C/W 2870w HOOD)
  - DOUBLE PERSONNEL DOOR 1829w x 2134h (C/W 2870w HOOD)
  - SIDE SLIDING CARGO DOOR 4445w x 4419h
  - END SLIDING CARGO DOOR TOP 4394w, BASE 5130w x 4419h
  - DOUBLE PANEL ROLLING DOOR TOP 2045w, BASE 10185w x 9296h (SEE DPRD-90)
  - TRIPLE PANEL ROLLING DOOR TOP 3035w, BASE 14845w x 9296h (SEE TPRD-90)

PLAN VIEW  
1:300

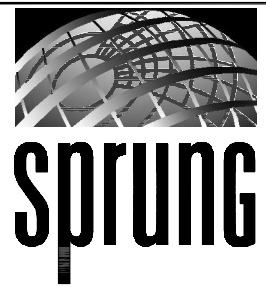


SECTION 27.4m STRUCTURE  
1:300



ELEVATION  
1:300

SIGNATURE SERIES



SIGNATURE SERIES 27.4m WIDE STRUCTURE	
DATE 11/16/2005	SCALE AS NOTED
DRAWING # S-90 METRIC	