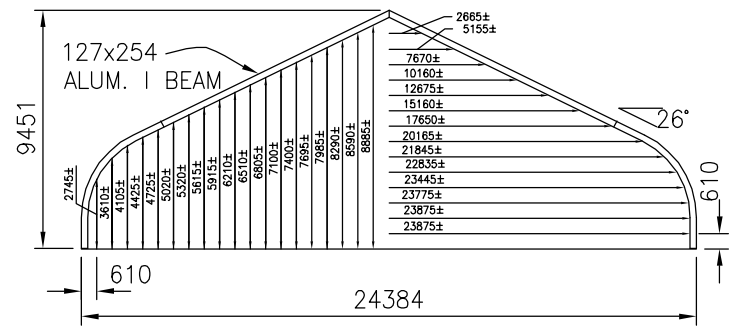
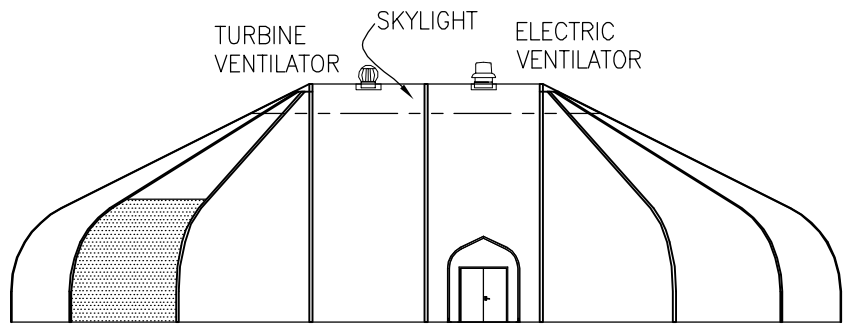


PLAN VIEW  
1:300

- THE FOLLOWING DOORS ARE AVAILABLE AT EXTRA CHARGE:
- SINGLE PERSONNEL DOOR 914w x 2134h (C/W 2870w HOOD)
  - DOUBLE PERSONNEL DOOR 1829w x 2134h (C/W 2870w HOOD)
  - SIDE SLIDING CARGO DOOR 4445w x 4419h
  - END SLIDING CARGO DOOR TOP 4367w, BASE 5181w x 4419h
  - DOUBLE PANEL ROLLING DOOR TOP 1825w, BASE 9015w x 8559h (SEE DPRD-80)
  - TRIPLE PANEL ROLLING DOOR TOP 2730w, BASE 13155w x 8559h (SEE TPRD-80)



SECTION 24.4m STRUCTURE  
1:300



ELEVATION  
1:300



SIGNATURE SERIES

SIGNATURE SERIES 24.4m WIDE STRUCTURE	
DATE 11/16/2005	SCALE AS NOTED
DRAWING # S-80 METRIC	