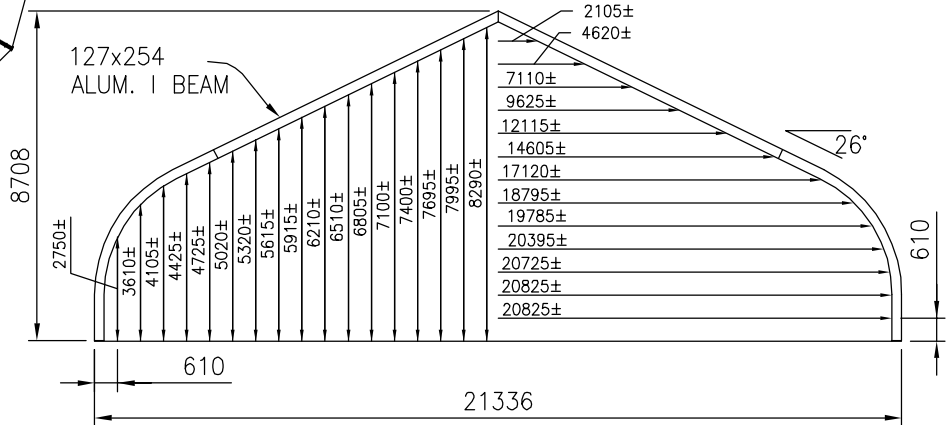
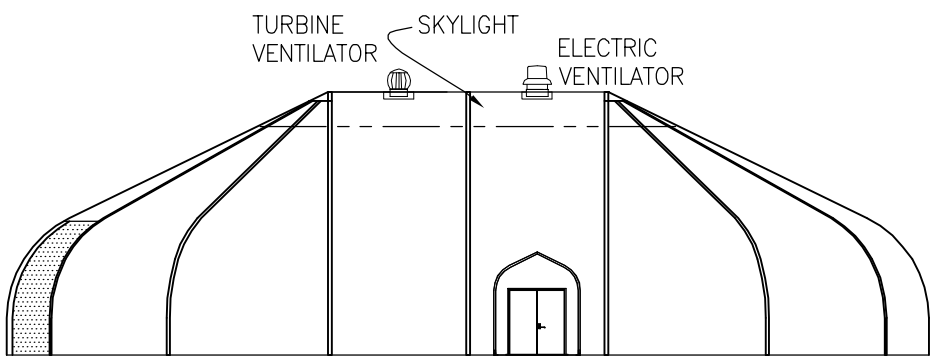


- THE FOLLOWING DOORS ARE AVAILABLE AT EXTRA CHARGE:
- SINGLE PERSONNEL DOOR 914w x 2134h (C/W 2870w HOOD)
 - DOUBLE PERSONNEL DOOR 1829w x 2134h (C/W 2870w HOOD)
 - SIDE SLIDING CARGO DOOR 4445w x 4419h
 - END SLIDING CARGO DOOR TOP 4318w, BASE 5257w x 4419h
 - DOUBLE PANEL ROLLING DOOR TOP 1855w, BASE 8925w x 7823h (SEE DPRD-70)
 - TRIPLE PANEL ROLLING DOOR TOP 2740w, BASE 12890w x 7823h (SEE TPRD-70)



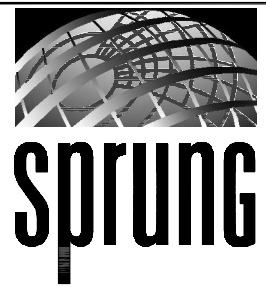
PLAN VIEW
1:250

SECTION 21.3m STRUCTURE
1:200



ELEVATION
1:250

SIGNATURE SERIES



SIGNATURE SERIES 21.3m WIDE STRUCTURE	
DATE 11/16/2005	SCALE AS NOTED
DRAWING # S-70 METRIC	